

# Long Leys Village Centre Project UPDATE

SEPTEMBER 2022

Published by LONG LEYS RESIDENTS ASSOCIATION (LLRA)

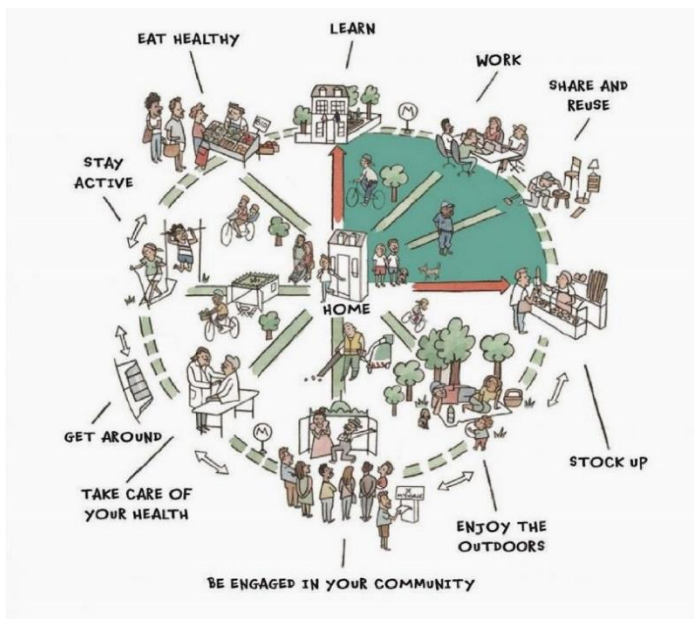
## Long Leys Village Centre

The Long Leys Village Centre project, announced in February 2022, has the aim of delivering a shop, community hub and community gardening centre at the heart of Long Leys by 2025. The identified location is within a 16-minute round trip walk of 94% of Long Leys homes, with many homes much closer. For details on the project visit [long-leys.org/village](https://long-leys.org/village)

The approach is based on a 20-Minute Neighbourhood, design with local facilities accessible within walking / cycling distance rather than being reliant on car usage. The project, using Community Right to Build legislation from the Localism Act 2011, would permit the Long Leys community to deliver needed key facilities without having to rely on public or private sector development plans.

**A 20-MINUTE NEIGHBOURHOOD** is a place designed so that residents can meet the vast majority of their day-to-day needs within a 20-minute round trip walk of their home.

This approach to providing local facilities within walking distance is gaining popularity worldwide including in Australia, USA and France (some suburbs of Paris are now planned this way) and is a key element of the latest National Planning Framework in Scotland.



20-Minute Neighbourhood Illustration. Key local facilities within walking/cycling distance of homes.

### A COMMUNITY DECISION IS NEEDED

LLRA feels it has sufficient feedback, over many years and from a large number of residents, that the proposed facilities would enhance the lives of those living in our community. Especially those who want to live independently but are less mobile and are not able to drive. National funding to develop the project further has been obtained, meaning a planning consultant can be appointed and community consultations to define more detailed plans can start soon. Nothing is set in stone and there needs to be realism on available options and on what can be achieved in reasonable timescales.

However, some in the community believe that a shop is not wanted or needed at all. As a result, before it will actively engage with the project, City of Lincoln Council is demanding proof that most Long Leys residents want the Village Centre project to progress further.

To check that there is a clear mandate for the project, a community vote on the Village Centre Project will be held at the LLRA AGM, 6.45pm Tuesday 1 November at the Discovery Café at St. George's hospital. For more details see: [long-leys.org/agm](https://long-leys.org/agm)

### LLRA would encourage all Long Leys residents 16+ to attend and cast a vote on the following resolution:

- The Long Leys Community approves the further development of a plan to deliver the Village Centre Project as broadly described in the February 2022 launch leaflet and requests that Carholme Councillors take an active role in helping deliver these much-needed local facilities for residents.

A large turnout in support of the resolution would give local Carholme Councillors a strong mandate to act on our behalf with the city council and would also trigger the consultation activity.

### Current Project Timeline\*

- Nov 2022 – Community AGM decision on whether to proceed with Long Leys Village Centre project.
- Summer 2023 – Initial consultation completed. Development of Community Right to Build (CRB) Order by planning consultant.
- Autumn 2023 – Plans scrutinised by independent planning examiner. Once complete, final community referendum of all Long Leys residents on the electoral roll on whether to approve project.
- Winter 2023 – Subject to referendum approval, request for consent on chosen location sent to Secretary of State by City of Lincoln Council.
- Summer 2024 – Anticipated approval to proceed to financing and construction stage.
- Autumn 2025. Buildings operational.

\*Subject to successful completion of previous stage

## A REMINDER OF THE KEY OBJECTIVES OF LONG LEYS VILLAGE CENTRE PROJECT

- Deliver a Village Centre which is an exemplar for zero carbon and sustainability in Lincoln.
  - Local shop
  - Community Hub and Community Gardening Centre
  - Create a “Place for Everyone” providing significant opportunities for social interaction, and which also helps address loneliness and mental health issues.
- Encourage a switch to walking and cycling to improve health and wellbeing.
- Improve allotment access and boost access to fresh food grown in Long Leys.

**KEEP UP TO DATE** on these and other developments by subscribing to the Long Leys Community Email List [long-leys.org/subscribe](https://long-leys.org/subscribe)

## PROPOSED DESIGN APPROACH (for consultation)

- A Place for everyone: Create opportunities for all members of the community to socialise and meet others to help address isolation and loneliness.
- Make it a development to be proud of: Complimenting existing buildings in Long Leys. Not just a box.
- Low energy use: Low demand for heating energy. Low embodied energy from construction materials used (Hempcrete?).
- Easily accessible: Encourage visits on foot & cycle to reduce reliance on car travel.

## CONTACT US

Contact LLRA by email [LLRA@long-leys.org](mailto:LLRA@long-leys.org).

## 20-Minute Neighbourhood: Proposed Location Coverage of Homes

The diagram below shows how the proposed location of the Long Leys Village Centre would cover Long Leys homes, with the blue shaded area covering all homes within a 20-minute round trip walk (10 minutes one way) of the shop. It also shows areas of similar shop coverage on the Burton Road, and Carholme Road.

